

# **Route 244**

*Updated: May 2013*

From Route 8 in Helper easterly, via Poplar Street to Main Street; thence northerly, via Main Street to Route 8, May 12, 1953.

**Approved by the 1963 Legislature:**

**Approved by the 1965 Legislature:**

**1967 Legislature:**

**1969 Legislature Description:**

From SR-27 in Helper easterly via Poplar Street to Main Street; thence northerly via Main Street to SR-27.

**1979 Legislature Description:**

From Route 6 in Helper easterly on Poplar Street to Main Street; then northerly on Main Street to Route 6.

**1981 Legislature:** Description remains the same.

**1983 Legislature:** Description remains the same.

**1985 Legislature:** Description remains the same.

**1986 Legislature:** Description remains the same.

**1987 Legislature:** Description remains the same.

**1988 Legislature:** Description remains the same.

**1990 Legislature:** Description remains the same.

**1992 Legislature:** Description remains the same.

**1993 Legislature:** Description remains the same.

**1994 Legislature:** Description remains the same.

**1995 Legislature:** Description remains the same.

**1996 Legislature:** Description remains the same.

**1997 Legislature:** Description remains the same.

**1998 Legislature:** Description remains the same.

**1999 Legislature:** Description remains the same.

**2000 Legislature:** Description remains the same.

**2001 Legislature:** Description remains the same.

**2002 Legislature:** Description remains the same.

**2003 Legislature:** Description remains the same.

**2004 Legislature:** Description remains the same.

**2005 Legislature:** Description remains the same.

**2006 Legislature:** Description remains the same.

**2007 Legislature:** Description remains the same.

**2008 Legislature:** Description remains the same.

**2009 Legislature:** Description remains the same.

**2010 Legislature:** Description remains the same.

**2011 Legislature:** Description remains the same.

**2012 Legislature:** Description remains the same.

2013 Commission Action – Deleted as a State Route from the State Highway System.

# **Route 244**

## **COUNTY/VOLUME & RESOLUTION NUMBER**

A. Carbon Co. 11/31

## **DESCRIPTION OF RESOLUTION CHANGE**

(A). Deletion -

Deleted as a State Route from the State Highway System. Portion transferred to Helper City and portion added to SR-157.

# **RESOLUTION**

## **Deletion SR-244 from State Highway System** **Transfer Portion SR-244 to Helper City and Addition to SR-157** **Carbon County**

**WHEREAS**, Section 72-4-102 of the Utah State Code provides for “Additions to or deletions from the state highway system – Designation of Highways as state highways between sessions”; and,

**WHEREAS**, the Utah Department of Transportation (UDOT) and Helper City have agreed to the transfer of maintenance and jurisdictional responsibilities of a portion of roadway known as SR-244 (Main Street) in Helper City, beginning at the Intersection of Poplar Street and SR-157 (Main Street) Mile Point 0.189 northerly to the Intersection of North Main and US-6 shown in Exhibit A; and,

**WHEREAS**, the Utah Department of Transportation has agreed to pay a one-time lump sum of \$750,000 to Helper City for this roadway transfer; and,

**WHEREAS**, the UDOT Region Four Director, along with the appropriate staff of the Program Development Division and the duly appointed officials of Helper City, concur with the request to transfer maintenance and jurisdictional responsibilities to Helper City for the transferred road described herein.

**NOW THEREFORE**, be it resolved as follows:

1. A portion of roadway known as SR-244, from Poplar Street MP 0.189 northerly via Main Street to the end of Route 244 at the Intersection of North Main and US-6 MP 0.910, approximately 0.721 miles, will be deleted from the State Highway System and transferred to the jurisdiction and maintenance responsibility of Helper City as shown in Exhibit “A”.
2. For the afore mentioned transferred roadway UDOT will pay a one-time lump sum of \$750,000 to Helper City, upon passage by the Utah Transportation Commission.
3. The afore mentioned transferred roadway will remain functionally classified as Major Collector and be placed on the Federal Aid Route System as Route 1325 adding 0.721 ± miles to Helper City’s road system.

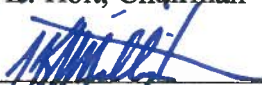
Deletion SR-244 from State Highway System  
Transfer Portion SR-244 to Helper City and Addition to SR-157  
Carbon County

4. The portion of roadway known as SR-244 from US-6 to the intersection of Poplar Street and Main Street approximately 0.189 miles will be added to the beginning of SR-157 and remain functionally classified as Major Collector therefore eliminating route number 244 from the State Highway System.
5. SR-157 will be described as follows: From Route 6 easterly via Poplar Street and southerly via Main Street in Helper; then southerly and northeasterly to Kenilworth.
6. These actions will become effective upon passage of this resolution by the Utah Transportation Commission.
7. The accompanying letter of agreement from Helper City, and map marked "Exhibit A" will be made part of this resolution.

Dated on this 10<sup>th</sup> day of May 2013

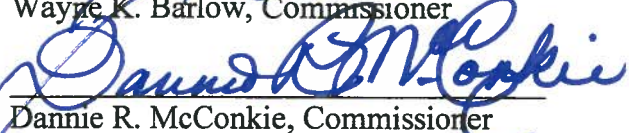
**UTAH TRANSPORTATION COMMISSION**

  
\_\_\_\_\_  
Jeffrey D. Holt, Chairman

  
\_\_\_\_\_  
J. Kent Millington, Vice-Chairman

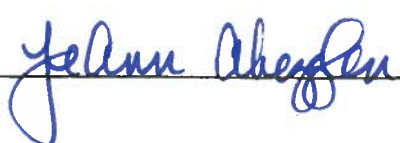
\_\_\_\_\_  
Meghan Z. Holbrook, Commissioner

  
\_\_\_\_\_  
Wayne K. Barlow, Commissioner

  
\_\_\_\_\_  
Dannie R. McConkie, Commissioner

  
\_\_\_\_\_  
Eddie L. Cox, Commissioner

  
\_\_\_\_\_  
Naghi Zeenati, Commissioner

Attest:  
Secretary 



# Helper City



**MAYOR  
EDWARD CHAVEZ JR.**

**73 South Main Street  
P.O. Box 221  
Helper, Utah 84526  
435-472-5391  
FAX 435-472-5530**

**COUNCIL  
ROBERT BRADLEY  
GARY HARWOOD  
JASON LLEWELYN  
KIRK MASCARO  
CHRIS PUGLIESE**

April 5, 2013

Daryl Friant  
UDOT Region Four  
East District Engineer  
210 West 800 South  
Richfield, UT. 84701

Dear Daryl,

On March 7, 2013 Helper City Council unanimously voted to take over SR-244 Helper Main Street from Utah Department of Transportation. The section beginning at the intersection of Poplar Street and Main Street (MP 0.189) to the intersection of North Main and US-6 (MP 0.910). Utah Department of Transportation will pay the sum of \$750,000 to Helper City.

Sincerely,

Edward Chavez  
Mayor

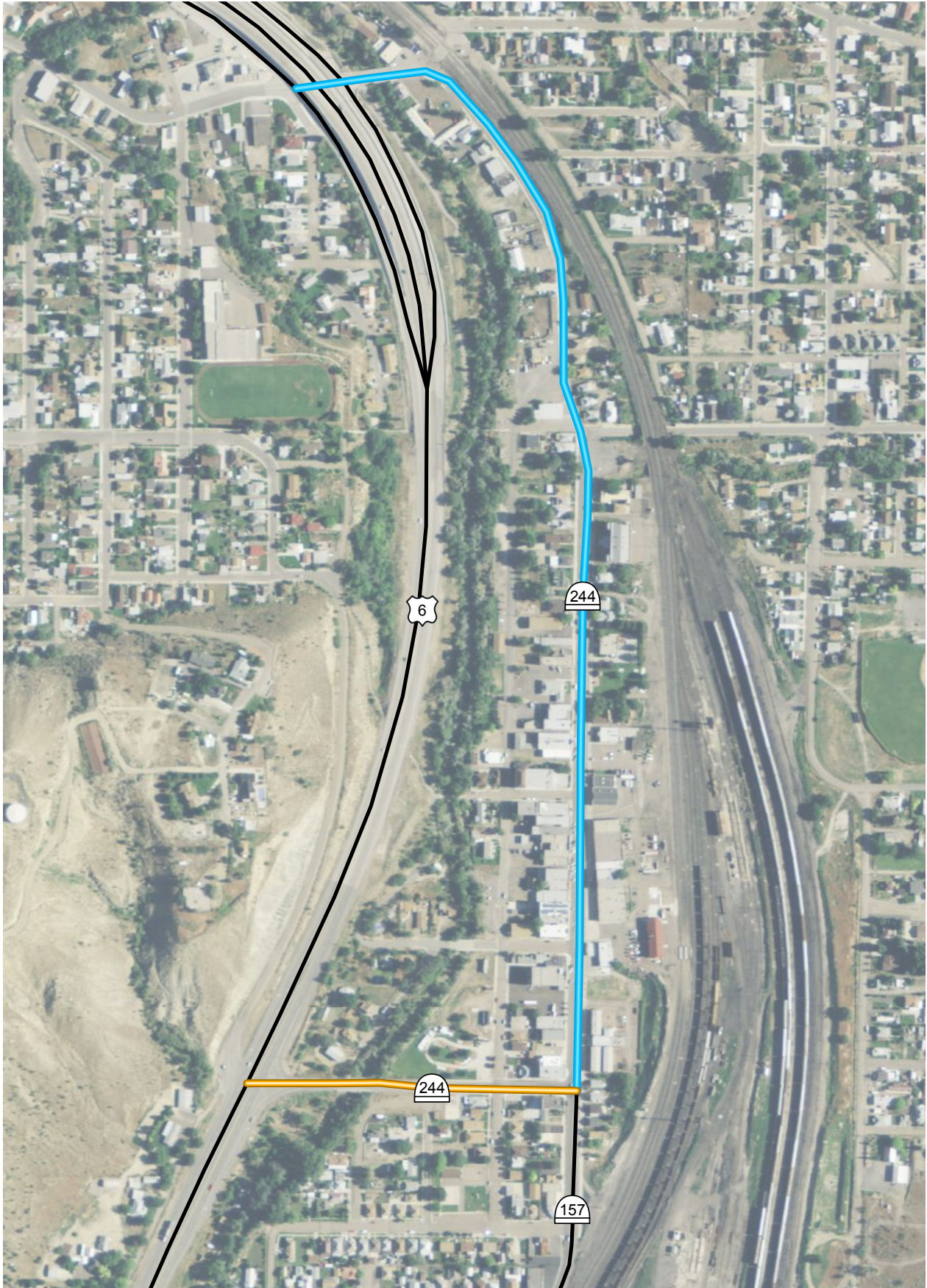




Exhibit 'A'

-  SR-244 - Transfer to the city of Helper
-  SR-244 - Renamed to SR-157